

MULTIPLEXING INSTRUCTION MANUAL **FULL HEIGHT MULTIDECK DISPLAY**

FHM1000-NR, FHM1250-NR, FHM1875-NR, FHM2500-NR,
FHM1000HD-NR, FHM1250HD-NR, FHM1875HD-NR,
FHM2500HD-NR.



Full Height Multideck Display Multiplexing Instructions

Part Number	Model Number
3335649-NR	FHM1000-NR
3335650-NR	FHM1250-NR
3335651-NR	FHM1875-NR
3335652-NR	FHM2500-NR
3335653-NR	FHM1000HD-NR
3335654-NR	FHM1250HD-NR
3335655-NR	FHM1875HD-NR
3335656-NR	FHM2500HD-NR

Tools

- Phillips Screwdriver
- Cordless impact driver
- Adjustable wrench (shifter)
- Hex-socket set
- Ratchet (optional)
- Allen Wrench /Hex Key set

Personnel

- The Full Height Multideck Multiplexing procedure requires **TWO PEOPLE** to complete.

Bromic Service Contact

- **T:** 1300 276 642
- **E:** service@bromic.com.au

Before Starting

Before starting the multiplexing procedure, remove all shelves, base plates, rear panel, front panels, and bumper from the unit.

STEP 1 - Removing the End Walls

- Start by removing the rear panels and base plates to access 4x bolts (Image 1)
- The end wall is held in place by insulation tape. Cut the insulation tape (Image 2)



Image 1



Image 2

- The glass section of the end wall is slotted loose into the metal frame. Be careful that it does not slide out during disassembly (Image 3 & 4)



Image 3



Image 4

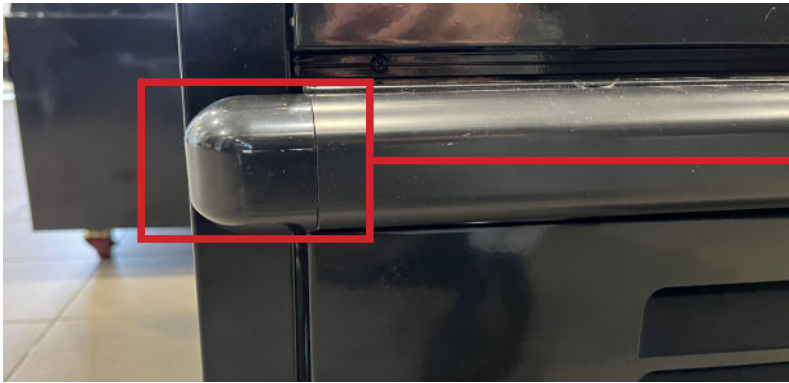
STEP 2 - Joining the Units

NOTE: Level Ground

1. The FHM's come fitted with castors by default. The castors are sufficient for multiplexing on level ground.
2. If the ground is not level, the castors must be replaced with levelling feet. These feet can be locally sourced "M16 Richmond Adjustable Levelling Feet".
3. The number of feet used is per the installer's discretion. In some cases, just two feet are sufficient to level the unit. Bromic recommends replacing all castors with feet for optimal levelling.

Front Bumper

- Remove 1 x end cap from each bumper for both cabinets (Image 5)



Remove the end cap

Image 5

Replacing Castors with Feet (optional)

- Remove 4x bolts which hold the castor in place (Image 6)

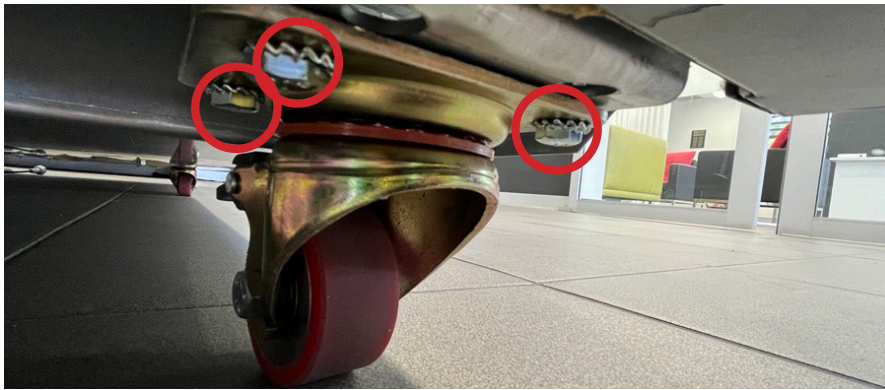


Image 6

- Screw the M16 levelling foot into the thread in the cabinet frame (Image 7)

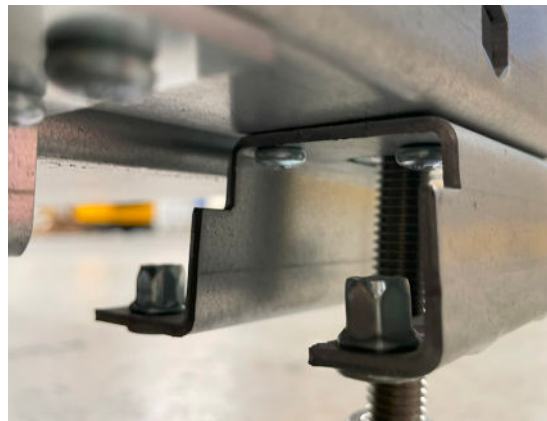


Image 7

Alignment Pins

- Now that you have ensured your units are levelled, using the diagram below, place the pins in the correct position. In your multiplexing kit, you should have received 2x Alignment Pins, 4x M8x100 bolts, 2x M8x100/120 (Image 8).

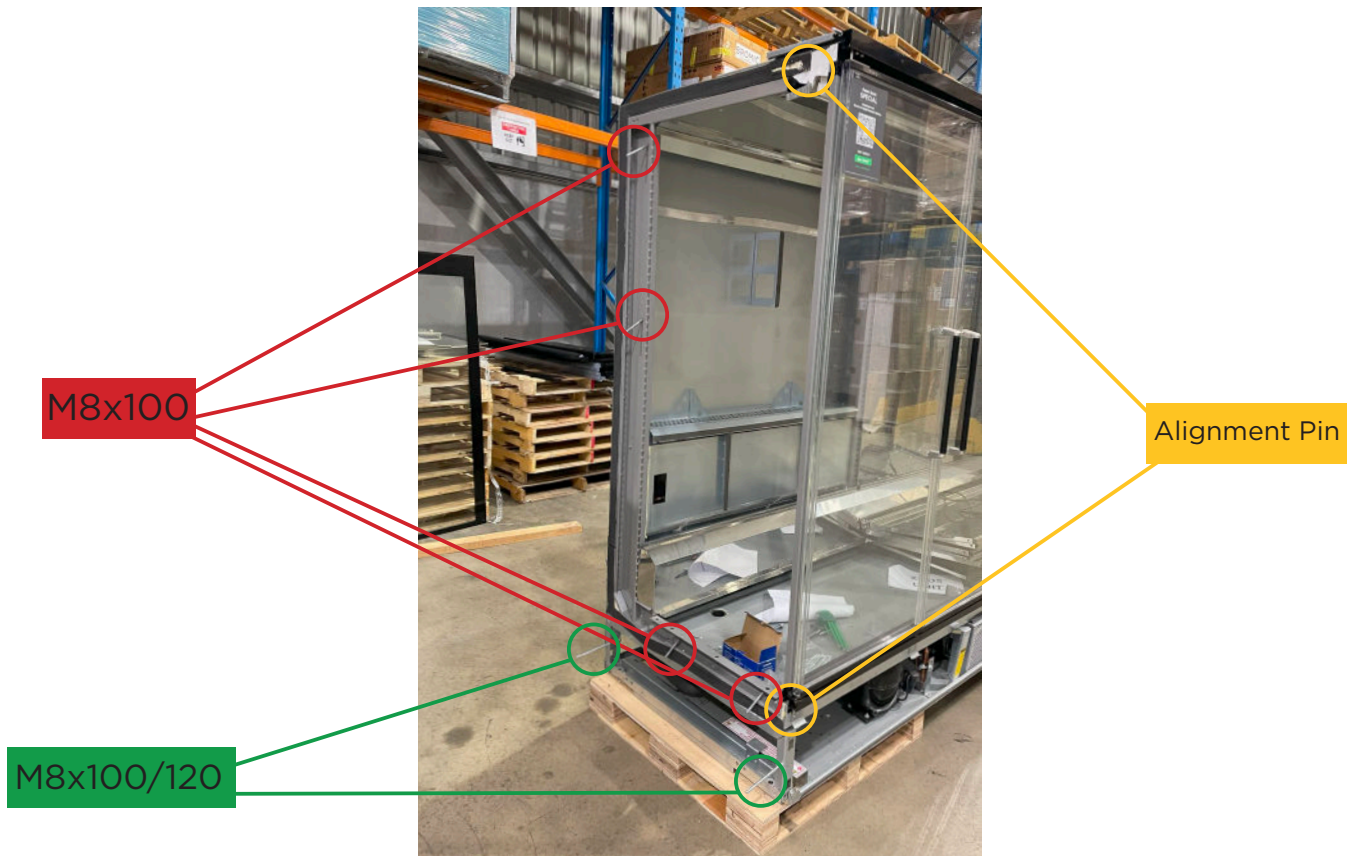


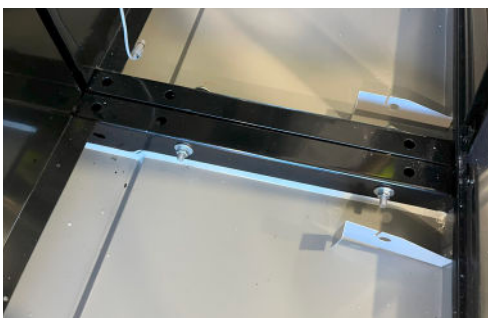
Image 8

Unit Connection

- Once all the bolts and pins have been placed in their correct position, slide the units together to begin to combine (Image 9).
- It is recommended that the bottom bolts are loosely fitted first, then fitting the upper bolts last. Only tighten after all bolts are in place.

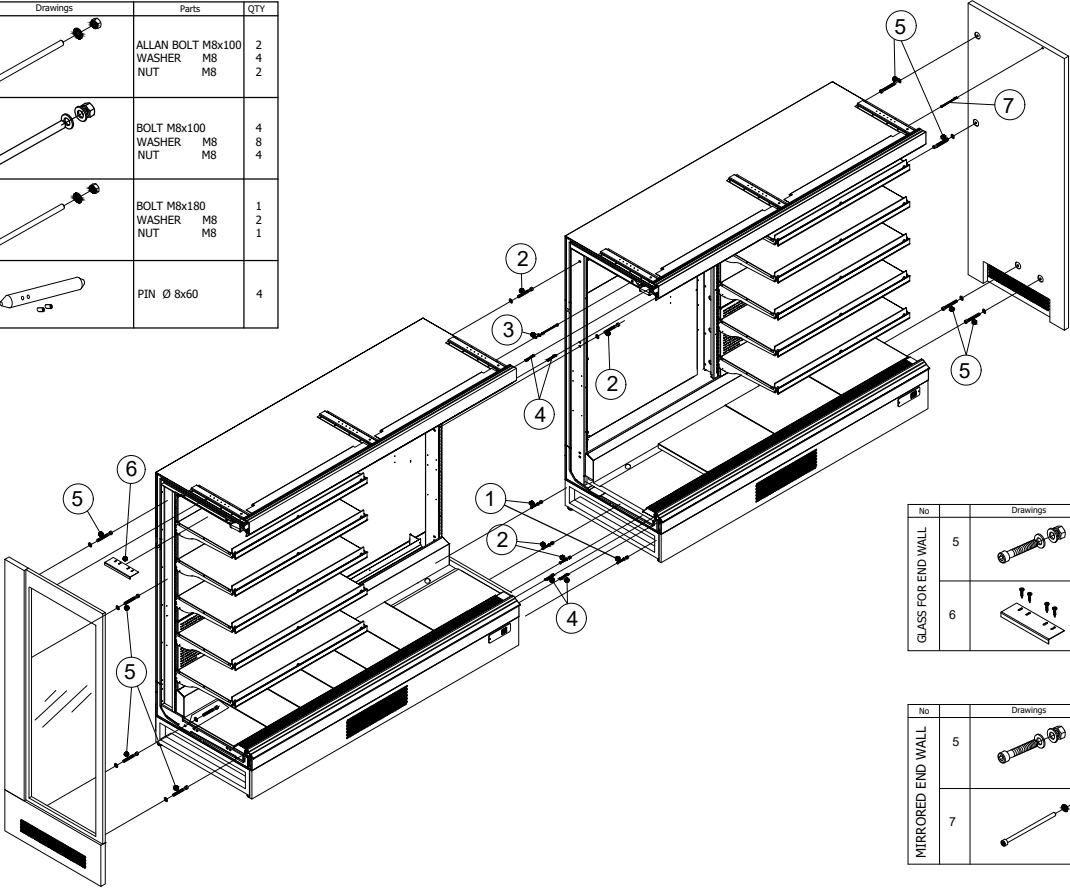


Image 9



Full Height Multideck Multiplexing Diagram

No	Drawings	Parts	QTY
MULTIPLIXING (CABINET)	1	ALLAN BOLT M8x100 WASHER M8 NUT M8	2 4 2
	2	BOLT M8x100 WASHER M8 NUT M8	4 8 4
	3	BOLT M8x180 WASHER M8 NUT M8	1 2 1
	4	PIN Ø 8x60	4



No	Drawings	Parts	QTY
GLASS FOR END WALL	5	BOLT M8x40 WASHER M8 NUT M8	4 8 4
	6	E.W. GLASS RETAINER SMART SCREW	1 4

No	Drawings	Parts	QTY
MIRRORED END WALL	5	BOLT M8x40 WASHER M8 NUT M8	4 8 4
	7	ALLAN BOLT M8x100 WASHER M8	1 1

BROMIC REFRIGERATION

10 Phiney Place, Ingleburn (Sydney)
NSW 2565 Australia
T. 1300 276 642

For further product information
bromicrefrigeration.com.au