

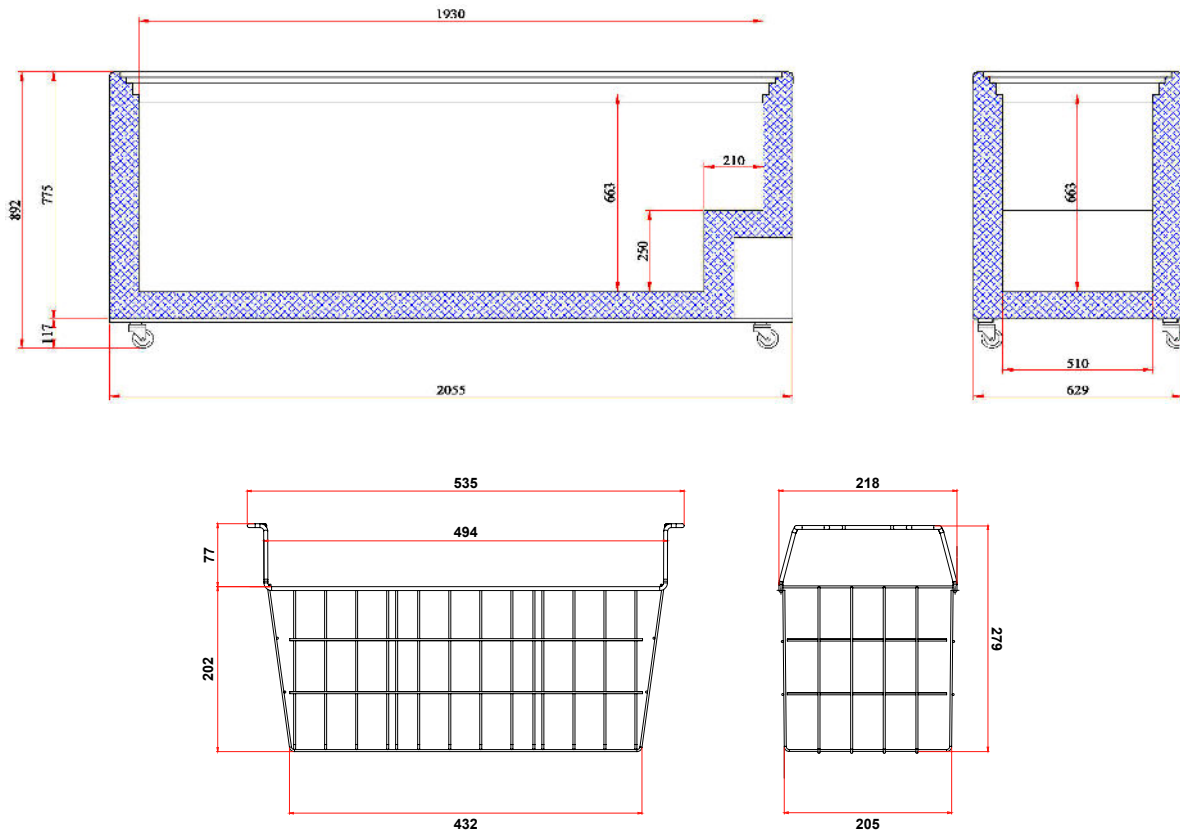
Display Chest Freezer 670L - Flat Glass Top

| Chest Freezers



Display Chest Freezer 670L - Flat Glass Top

Chest Freezers



SPECIFICATIONS

Model Number	CF0700FTFG-NR
Part Number	3735305-NR
Volume	670L
Unit Weight	120kg
Packaged Weight	125kg
Adjustable Temp. Range	-22°C to -12°C
Max. Ambient Temp.	35°C
Climate Class	4L1
Energy Consumption	3.57kWh/24h
GEMS Star Rating	7 Stars
Refrigeration Capacity	440W
Refrigerant	R290
Air Circulation	Static
Rated Current	1.73A
Electrical Voltage	220-240V
Frequency	50Hz
Power Supply	Single Phase

Plug Plug	1 x 10A
Cord Length	2m
Plug Location	Rear, bottom right
Colour	White
Internal Light	No
No. of Lids	2
Lid Type	Glass
Lid Shape	Flat
Lid Style	Sliding
Lid Lock	Yes
No. of Baskets	8
Basket Dimensions	205(w) x 432(d) x 202(h) mm
Defrost System	Manual
Temp. Controller	Analogue controller, digital display
Castors	Yes
Warranty	5 Years Bromic Extra Care Warranty - Parts and Labour

DIMENSIONS

	External (mm)
Width	2055
Depth	629
Height	892
	Internal (mm)
Width	1930
Depth	510
Height	663
	Packaged (mm)
Width	2095
Depth	680
Height	950