

BROMIC
REFRIGERATION

Confidence and control.

Deli Display Fridges

Curved Glass | Square Glass







Bromic Introduces Deli Display Fridges

Introducing Bromic's newest range of Deli Display Fridges - the perfect solution for food retail businesses looking for dependable, user-friendly, and long-lasting equipment.

Our fridges are engineered to the highest standards, incorporating advanced refrigeration and food safety features that make them an essential piece of equipment for any retail environment.

Deli Display Fridges

Curved Glass



Sliding plexi-glass to easily re-stock deli from the rear

Easy access to food items with hydraulic lift-up front glass

Additional refrigerated storage space at the back to maximise storage

Accurate temperature control with a digital controller

Convenient food preparation with a rear bench

Easily remove display trays for cleaning

Bright LED lighting in natural light to enhance the presentation of displayed food

Choose between standalone use or multiplexing to expand the display area

Save on energy costs and reduce environmental impact with natural refrigerant

Move the fridge around with ease thanks to castors

Removable front panel to quickly access and clean the unit for optimal performance

Safe for food storage with 3M1 climate class certification



Square Glass

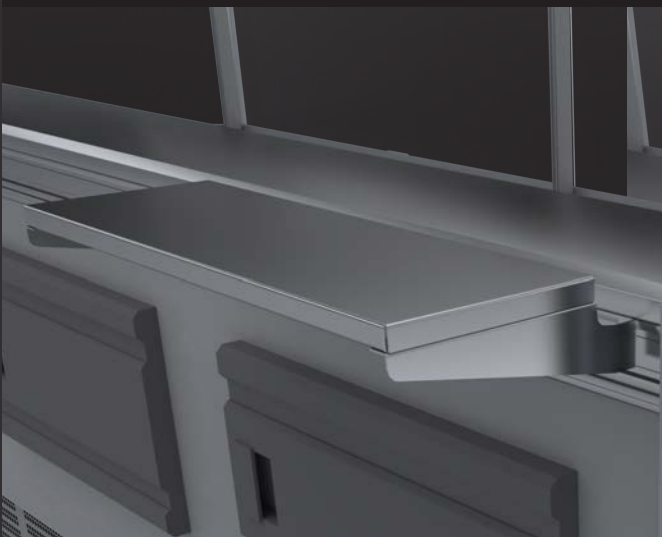
Accessories

Designed
to maximise
service
efficiency



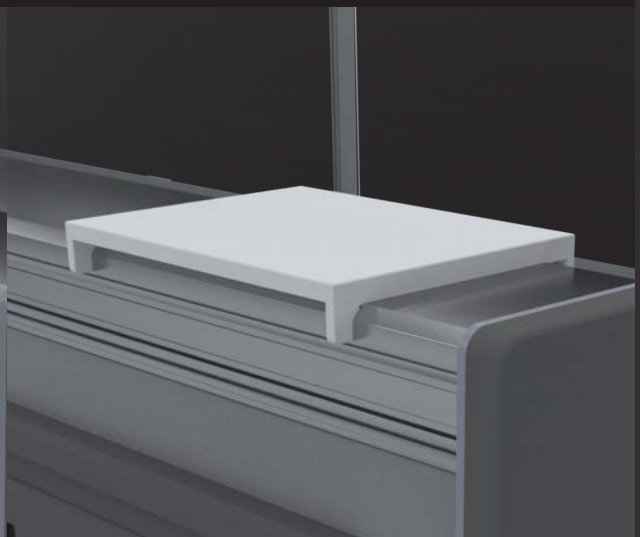
PAPER HOLDER
3335630003

Keep wrapping paper nearby, making it easy to package products for sale.



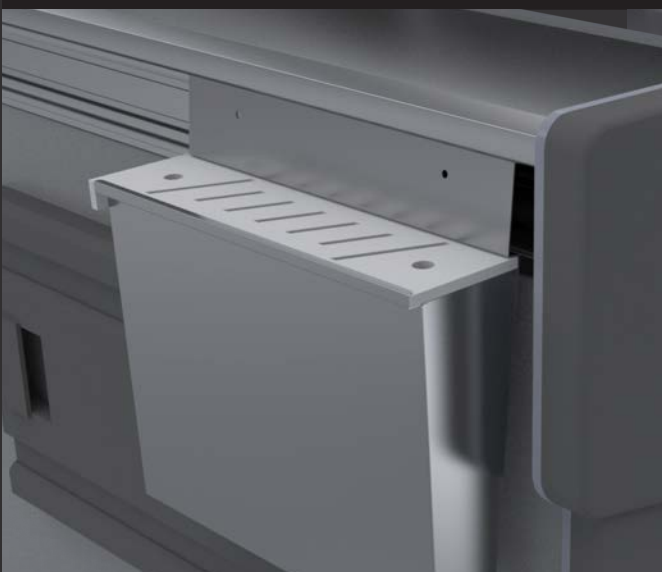
SCALE DECK
3335630004

Quickly weigh and portion food items while maximising your workspace.



CUTTING BOARD
3335630005

350mm wide hygienic space for food preparation that can be easily cleaned.



KNIFE HOLDER
3335630001

2 round slots for butcher's steels and 7 knife slots of various sizes to keep knives organised.



BAG HOLDER
3335630002

Store your bags in close reach to serve your customers quicker. Suitable for bags up to 330mm wide.

Specifications



Model	DD1250CG-NR	DD1875CG-NR	DD2500CG-NR
Part Number	3335636	3335637	3335638
Capacity			
Capacity	351L	527L	703L
Dimensions			
External Dimensions	W1330 x D1086 x H1290mm	W1955 x D1086 x H1290mm	W2580 x D1086 x H1290mm
Packaged Dimensions	W1350 x D1180 x H1740mm	W2000 x D1180 x H1740mm	W2650 x D1180 x H1740mm
Net Weight	237Kg	306Kg	381Kg
Temperature			
Adjustable Temp. Range	-1°C to 10°C	-1°C to 10°C	-1°C to 10°C
Max. Ambient Temp. Range	25°C	25°C	25°C
Energy			
Energy Consumption	6.1kWh/24h	8.5kWh/24h	11.6kWh/24h
Climate Class	3M1	3M1	3M1
Features			
Internal Light	LED	LED	LED
Colour Temperature	4000K	4000K	4000K
Number of Doors	1	2	3
Door Type	Solid	Solid	Solid
Door Style	Hinged	Hinged	Hinged
Door Lock	No	No	No
Door Swing Dimension	612mm	612mm	612mm
Total Depth of Door Open	1698mm	1698mm	1698mm
Defrost System	Automatic	Automatic	Automatic
Temp Controller	Digital	Digital	Digital
Rear Storage	Yes	Yes	Yes
Castors	Yes	Yes	Yes
Hydraulic Lift-up System	Yes	Yes	Yes
Front Lifting Glass	Yes	Yes	Yes
Refrigeration			
Refrigerant	R290	R290	R290
Refrigeration Capacity	389W	497W	759W
Air Circulation	Fan Forced	Fan Forced	Fan Forced
Electrical			
Rated current	1.69A	2.16A	3.30A
Voltage	220-240V	220-240V	220-240V
Frequency	50Hz	50Hz	50Hz
Power Supply	Single Phase	Single Phase	Single Phase
Plug	1 x 10A	1 x 10A	1 x 10A
Plug Location	Rear, bottom left	Rear, bottom left	Rear, bottom left
Warranty			
Extra Care Warranty	2 years	2 years	2 years



Model	DD1250SG-NR	DD1875SG-NR	DD2500SG-NR
Part Number	3335631	3335632	3335633
Capacity			
Capacity	351L	527L	703L
Dimensions			
External Dimensions	W1330 x D1086 x H1290mm	W1955 x D1086 x H1290mm	W2580 x D1086 x H1290mm
Packaged Dimensions	W1350 x D1180 x H1740mm	W2000 x D1180 x H1740mm	W2650 x D1180 x H1740mm
Net Weight	237Kg	306Kg	381Kg
Temperature			
Range	-1°C to 10°C	-1°C to 10°C	-1°C to 10°C
Max. Ambient Temp.	25°C	25°C	25°C
Energy			
Energy Consumption	6.1kWh/24h	8.5kWh/24h	11.6kWh/24h
Climate Class	3M1	3M1	3M1
Features			
Internal Light	LED	LED	LED
Colour Temperature	4000K	4000K	4000K
Number of Doors	1	2	3
Door Type	Solid	Solid	Solid
Door Style	Hinged	Hinged	Hinged
Door Lock	No	No	No
Door Swing Dimension	625mm	625mm	625mm
Total Depth of Door Open	1721mm	1721mm	1721mm
Defrost System	Automatic	Automatic	Automatic
Temp Controller	Digital	Digital	Digital
Rear Storage	Yes	Yes	Yes
Castors	Yes	Yes	Yes
Hydraulic Lift-up System	Yes	Yes	Yes
Front Lifting Glass	Yes	Yes	Yes
Refrigeration			
Refrigerant	R290	R290	R290
Refrigeration Capacity	389W	497W	759W
Air Circulation	Fan Forced	Fan Forced	Fan Forced
Electrical			
Rated current	1.69A	2.16A	3.30A
Voltage	220-240V	220-240V	220-240V
Frequency	50Hz	50Hz	50Hz
Power Supply	Single Phase	Single Phase	Single Phase
Plug	1 x 10A	1 x 10A	1 x 10A
Plug Location	Rear, Bottom left	Rear, Bottom left	Rear, Bottom left
Warranty			
Extra Care Warranty	2 years	2 years	2 years

BROMIC REFRIGERATION

10 Phiney Place, Ingleburn (Sydney)
NSW 2565 Australia
T. 1300 276 642

For further product information
bromicrefrigeration.com.au

